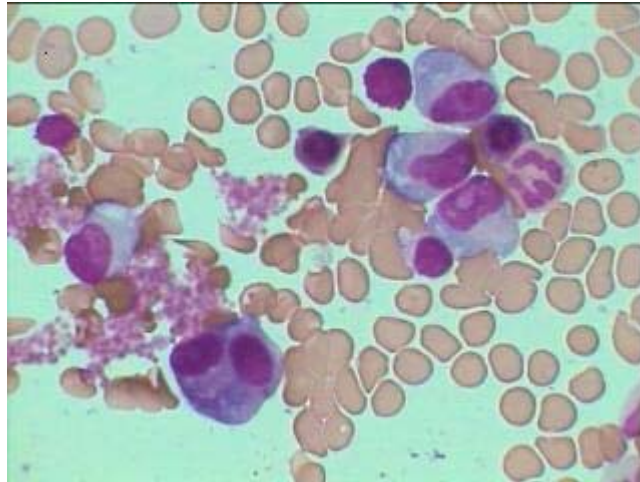
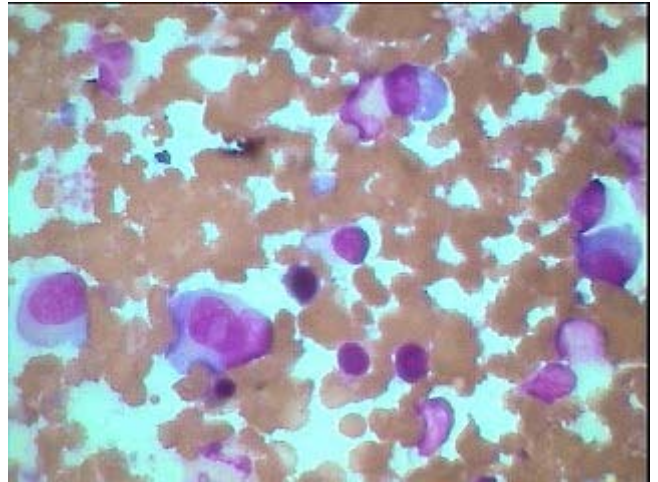


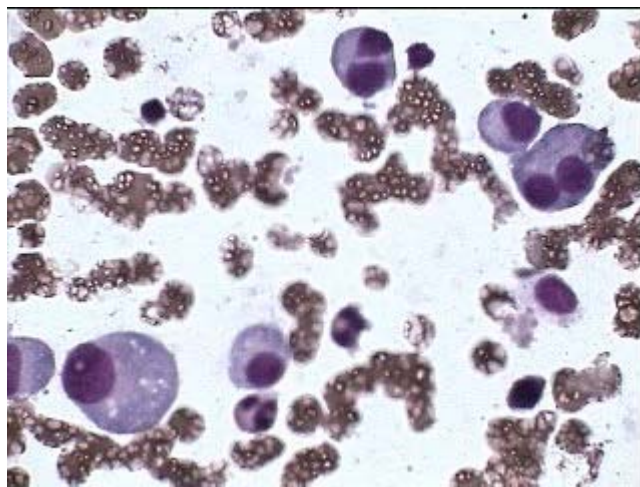
Morphological variations in Myeloma cells



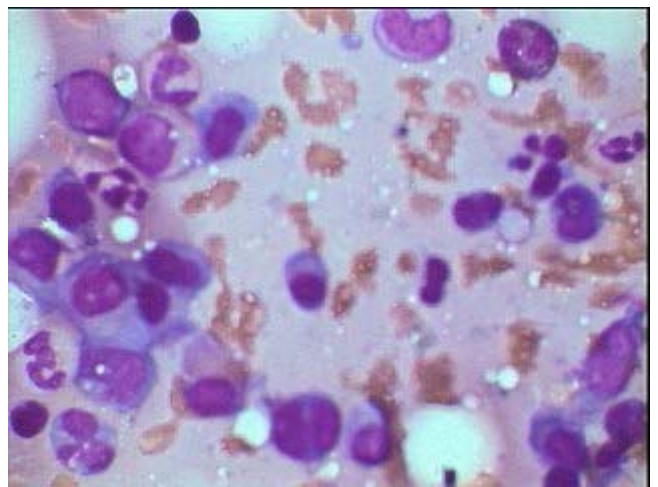
Neoplastic Plasma cells with distinct nucleoli at the left and a binucleate cell at the bottom



One highly neoplastic Plasma with two nuclei overlapping each other and a large distinct nucleoli.



Three binucleate Plasma cell with another three all showing significant pleomorphism and red cells showing rouleux formation.



Highly malignant Plasma cells as if forming a syncytium of 4 cells with another cell showing nuclear lobulation at the lower left