

## Atypical Morphology of APML

2:28:04 PM/18-04-2009



Almost whole field is packed with highly Atypical Promyelocytes in BM of AML type M-3 where most of the cells appear hypogranular.

2:35:12 PM/14-04-2009

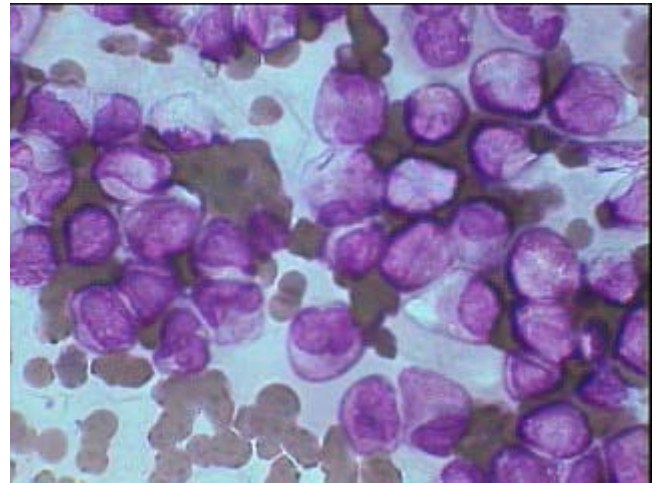


Highly abnormal nuclear configuration in APML cells, showing lobulation and even multi-lobulation (Club like appearance in the cell at the left).

2:29:30 PM/14-04-2009



Strip of APML cells with normal granularity at the top, center and left while showing nuclear lobulation are at the right.



Hypogranular appearing cells in APML with one cell at the center showing typical auer rod. Almost all the cells are strongly positive for MPO shown earlier in June 08 under HOPII.