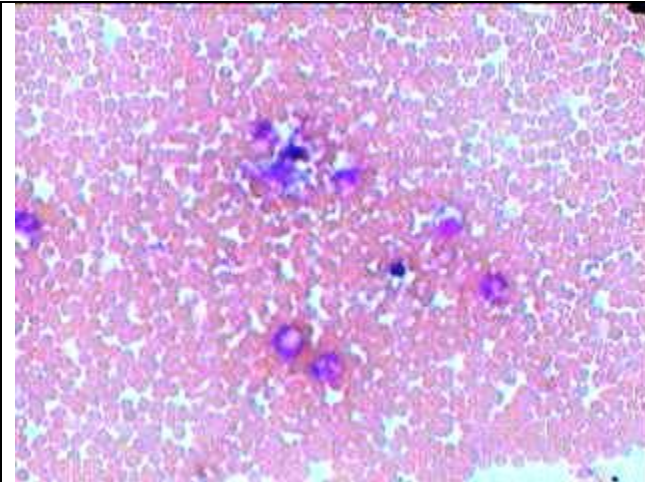
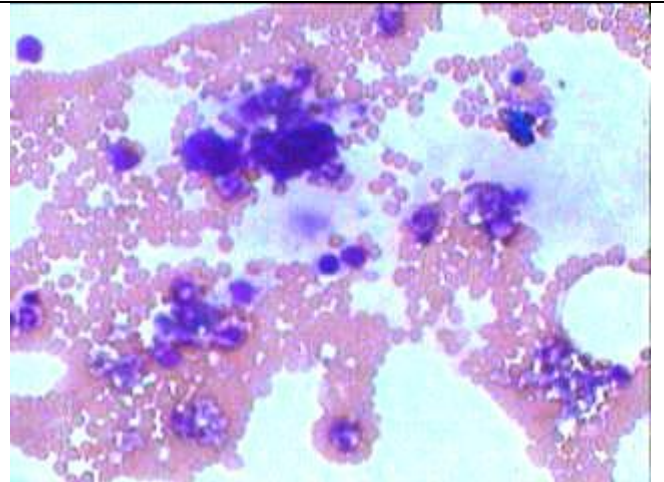


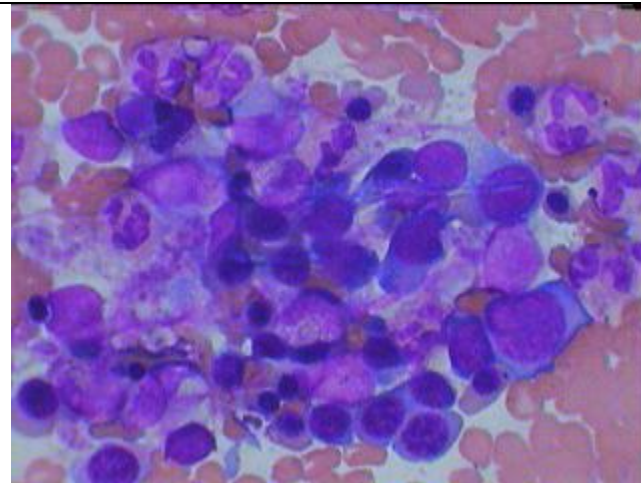
Polycythemia Vera- as seen in PB Smear and B.Marrow



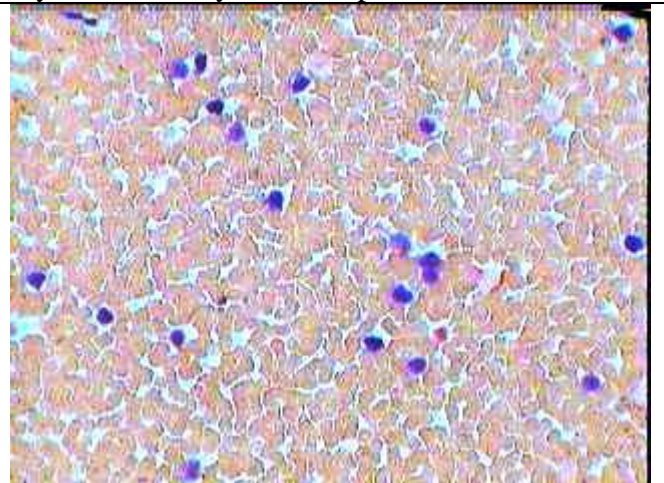
PB smear showing closely packed normocytic normochromic RBC along with few neutrophils



HP view of BM showing megakaryocytes surrounded by sheets of platelets with both erythroid and myeloid cell precursors



Oil Immersion view of marrow particle showing tightly packed haemopoietic cells of erythroid and myeloid series



Very high LAP score showing 3-4 positivity of myeloid cells in the same BM from Polycythemia

Peripheral blood of this patient shows Hct-53, Hb-18.8, and RBC 5.8 mill/cmm. Splenomagaly with trilinear hyperplasia in the marrow and ruling out other possible causes of erythrocytosis are suggestive of Polycythemia-vera.