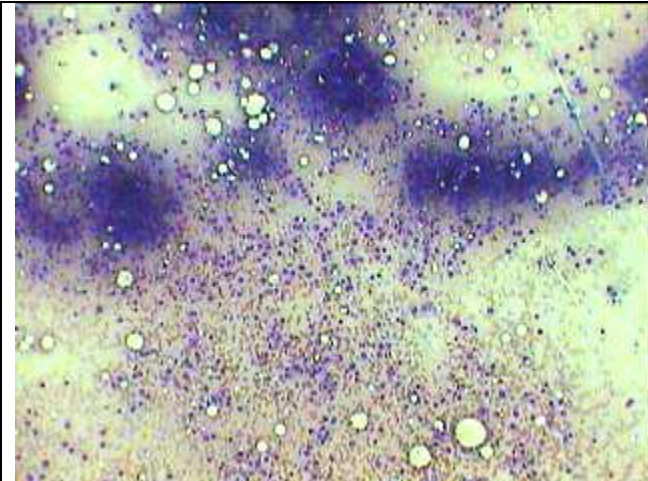
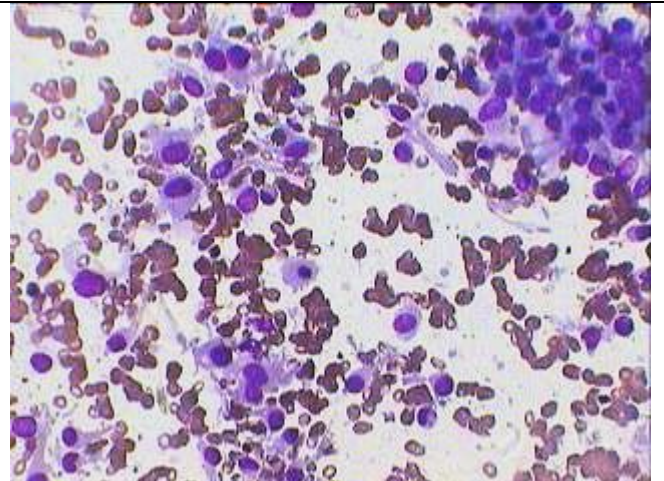


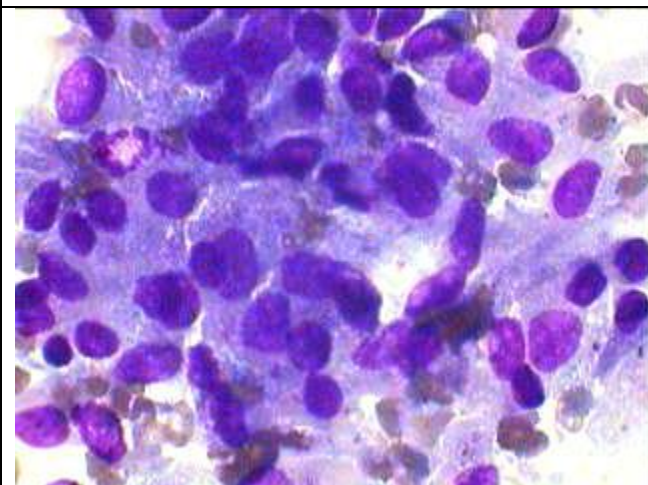
Malignant Large cell Poorly Differentiated Lymphoma Infiltrating Marrow



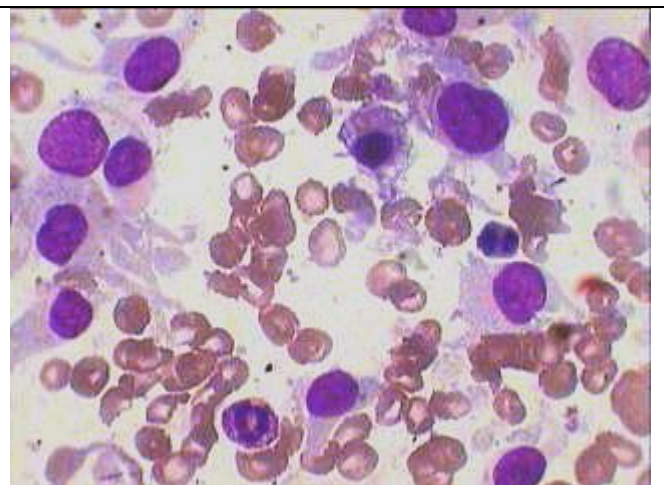
Focal collection of Group cells as viewed under LP scanning lens in the BM aspiration smear The lower part shows various haemopoietic cells



Same as left under HP showing both focal and diffuse infiltration by large atypical neoplastic cells with fairly large cytoplasm.



Densely packed large cells with voluminous basophilic cytoplasm having irregular borders simulating atypical/ neoplastic reticulum cells/immunoblastic cells



Loosely spread large cells having reticulum cells or histiocytic appearance from the same marrow, Showing disproportionately large nucleus with distinct nucleoli in some