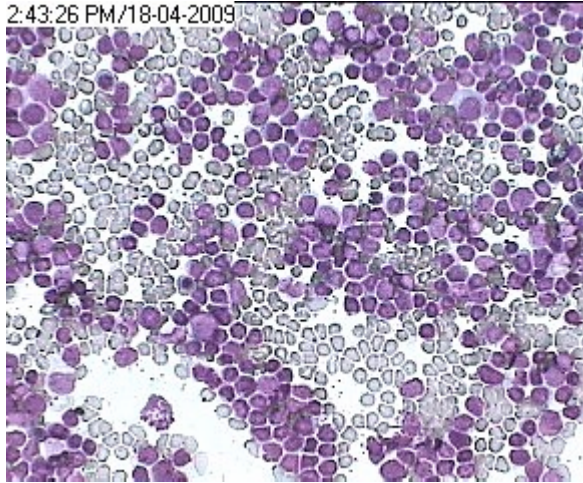


Ac.Lymphoblastic Leukemia (ALL) type L-1

2:43:26 PM/18-04-2009

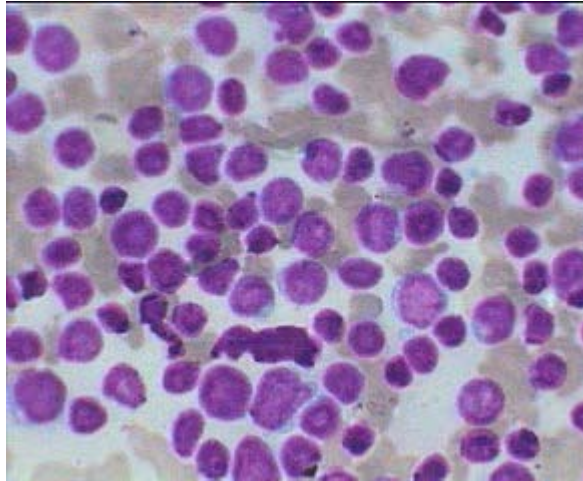


HP view of ALL-type L-1 showing hypercellular BM packed with small monomorphic Lymphoblasts.

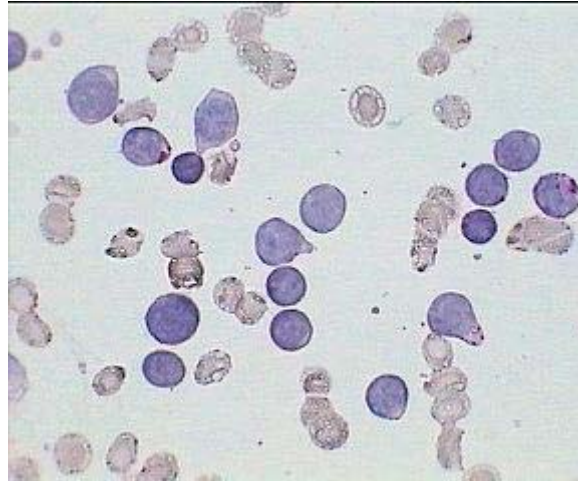
2:45:53 PM/18-04-2009



Lymphoblasts of ALL-type L-1 (with few erythroblasts) showing mild pleomorphism and relatively dense nuclear chromatin with out any distinct nucleoli.



Almost monomorphic Lymphoid blast cells with few mature lymphocytes from ALL type L-1 under Oil-Imm.



Distinct dot-PAS positivity in some of the Lymphoid blasts cells present at 3, 5 and 11 o'clock positions in ALL-type L-1