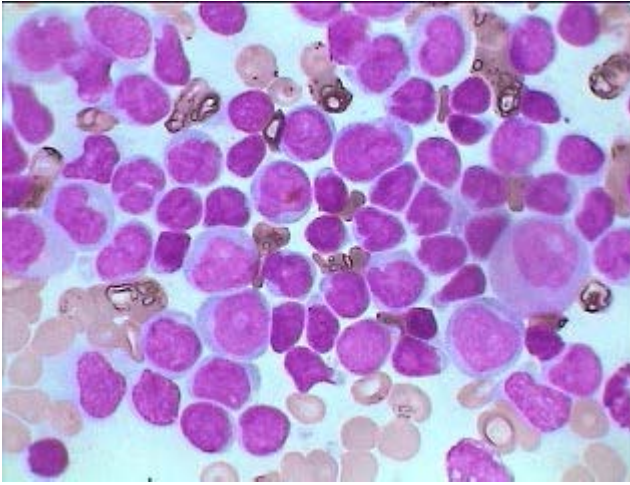
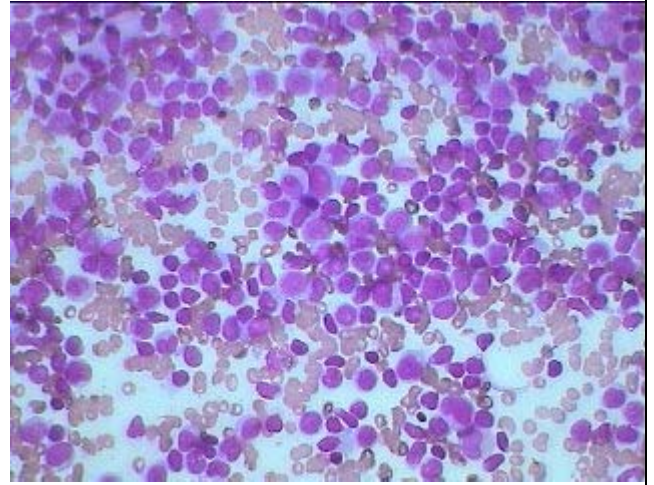


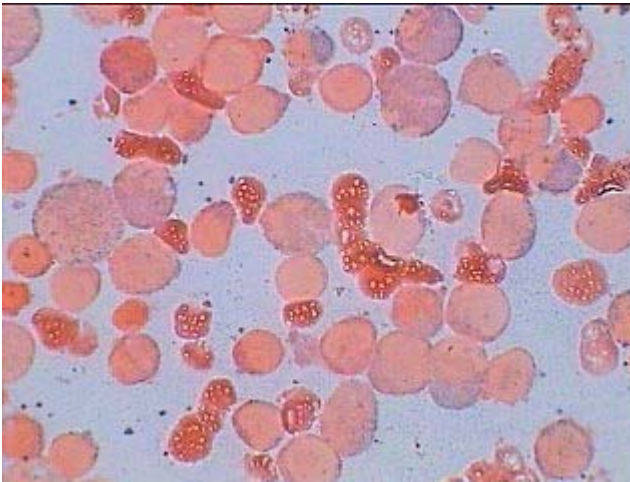
Acute biphenotype (Both Myeloid & Lymphoid)Leukemia



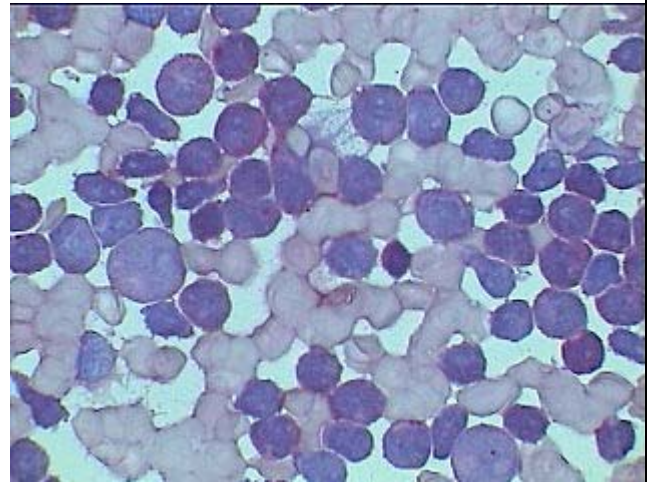
Ac.Biphenotype-Leukemia-First- large cell population consisting of myeloid blast and Second- smaller cells are lymphoid blasts



HP picture of the same Ac.Biphenotype leukemia showing two distinct population of cells



MPO Stain showing Peroxidase positive Meyloid blasts while the smaller being Lymphoid blasts are negative



A few dot PAS positive cells (to the right of bottom mid line and to the left of upper mid line) are lymphoid blast while the other larger cells are negative.