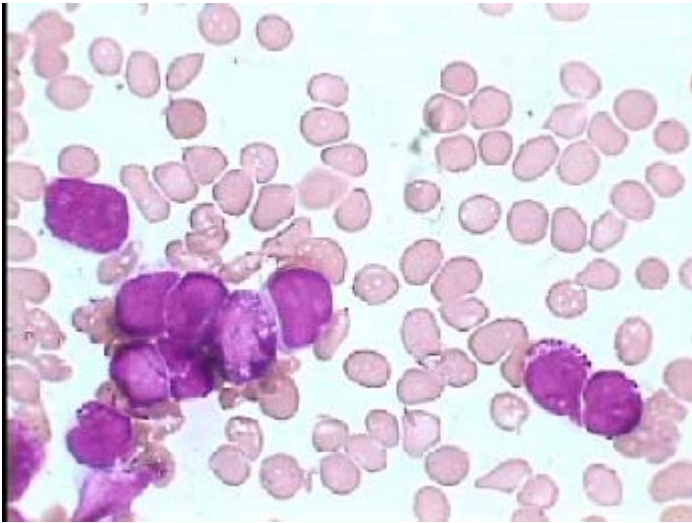
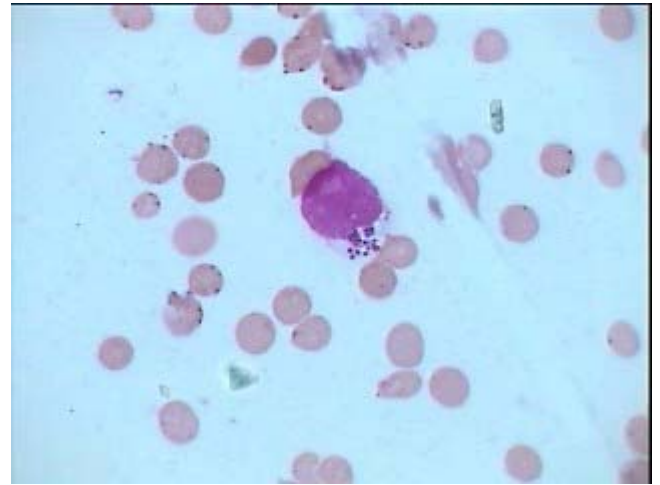


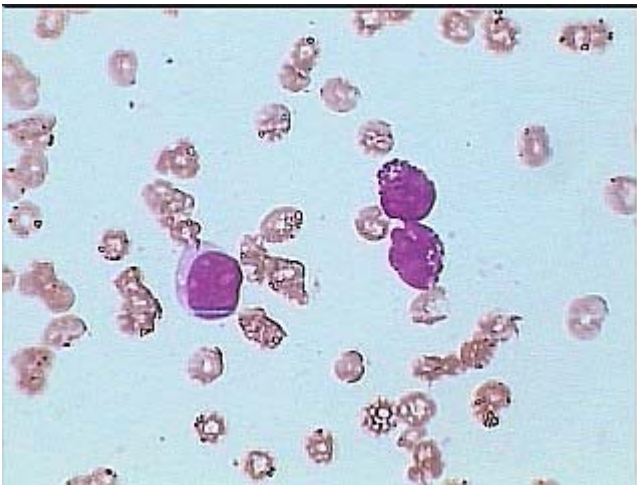
Acute Basophilic Leukemia



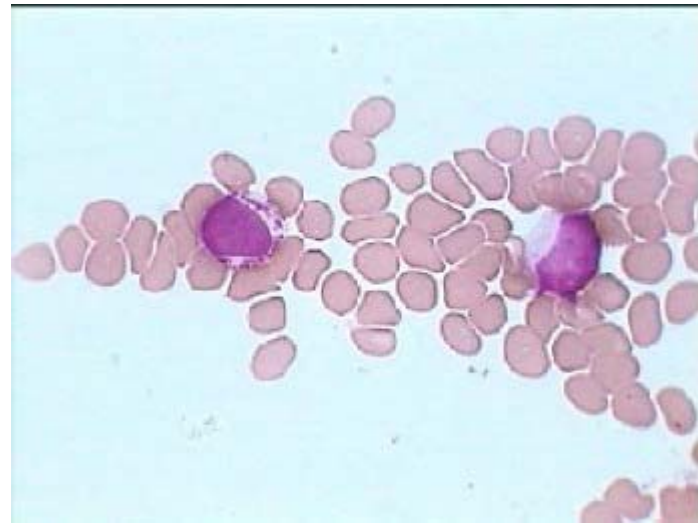
One Basophiloblast with string of large basophilic granules & other with fewer granules (right) & one Promyelocyte with blasts at the left.



Basophiloblast with large Basophilic granules and distinct single nucleolii



One leucoblast with out granules and two other on the right (Basophilic promyelocyte and myelocyte) with large basophilic granules.



One blast with string of basophilic large granules and the other without granules