

## Registration Fees

	Up to	Up to	Spot
	31/12/09	31/1/10	
PG Students Certificate from the HOD is Necessary	Rs. 1000	Rs. 1500	Rs. 2000
Delegate	Rs. 1500	Rs. 2000	Rs. 2500
Overseas Delegate	USD 100	USD 150	USD 200

## Payment Details

Please find enclosed DD / Cheque No. \_\_\_\_\_

Dated \_\_\_\_\_

Drawn on \_\_\_\_\_

Please draw Cheque / DD favouring

**CME Mol Diagnostics 2010**

payable at Pune

**Accommodation at Venue is available for limited delegates on a first come basis, till December 31, 2009.**

**Please contact [ajit@ateamevents.com](mailto:ajit@ateamevents.com) for further details.**

**Please send your registration form filled form with payment to the Conference Secretariat**

**The *A* Team**  
the event managers

14/B7, Vrundavan Housing Complex, Third Floor, Sector B,  
52/28 AB, Kothrud, Opp. Guruganesh Nagar,  
Pune 411 038  
Tel: 020 2538 0406 Fax: 020 2538 0407  
Email: [ajit@ateamevents.com](mailto:ajit@ateamevents.com)

## Highlights of Scientific Program

- Diagnostic Molecular Laboratory Organisation
  - Basics of Genetics
  - Structure of Molecular Laboratory
  - Quality Control & CAP Certification
- Translational Aspects
  - Pharmacogenomics & Genetic Heterogeneity in Indian Population
  - Medical Education
  - Bench to Bedside : Research & Molecular Diagnostics
  - Proteomics
  - Medical Education & Training in the Molecular Era
- Applications in Surgical Pathology, Hemato-pathology & Infectious Diseases

## About the Host City

Pune - Punyanagari, as it is rightly described, is one of the most blessed and outstanding cities of India. It has had the privilege of having been associated with leading saints, scholars, warriors, merchants, traders, diplomats and artists.

This land once a part of the jahagir of Chatrapati Raja Shivaji and later nurtured to its cultural, academic and financial glory by the brilliant and brave Peshwas has inseparable ties with the freedom fight of our nation.

Pune is situated on the banks of the confluence of Mula and Mutha rivers at an altitude of over 1800 ft. above sea level. Pune is surrounded by many beautiful places of tourist interest.

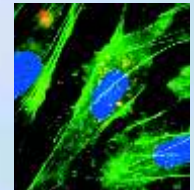
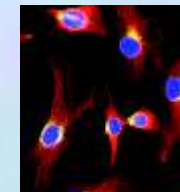
The weather in Pune during February is pleasant and enjoyable and you may need light woolens.

For any assistance for  
Registration, and  
Hotel Accommodation  
Please contact  
Mr. Ajit Bhide on 09860404990

# CME on Molecular Diagnostics - 2010

6<sup>th</sup> & 7<sup>th</sup> February 2010

Venue : YASHADA Auditorium,  
Sakal Nagar, Baner Road, Pune



Organized by GMHS  
Golwilkar Metropolis Health Services (I) Private Ltd

In Association with KIMSU  
Krishna Institute of Medical Sciences University

Under the Auspices of AIPNA -  
Association of Indian Pathologists  
of North America

